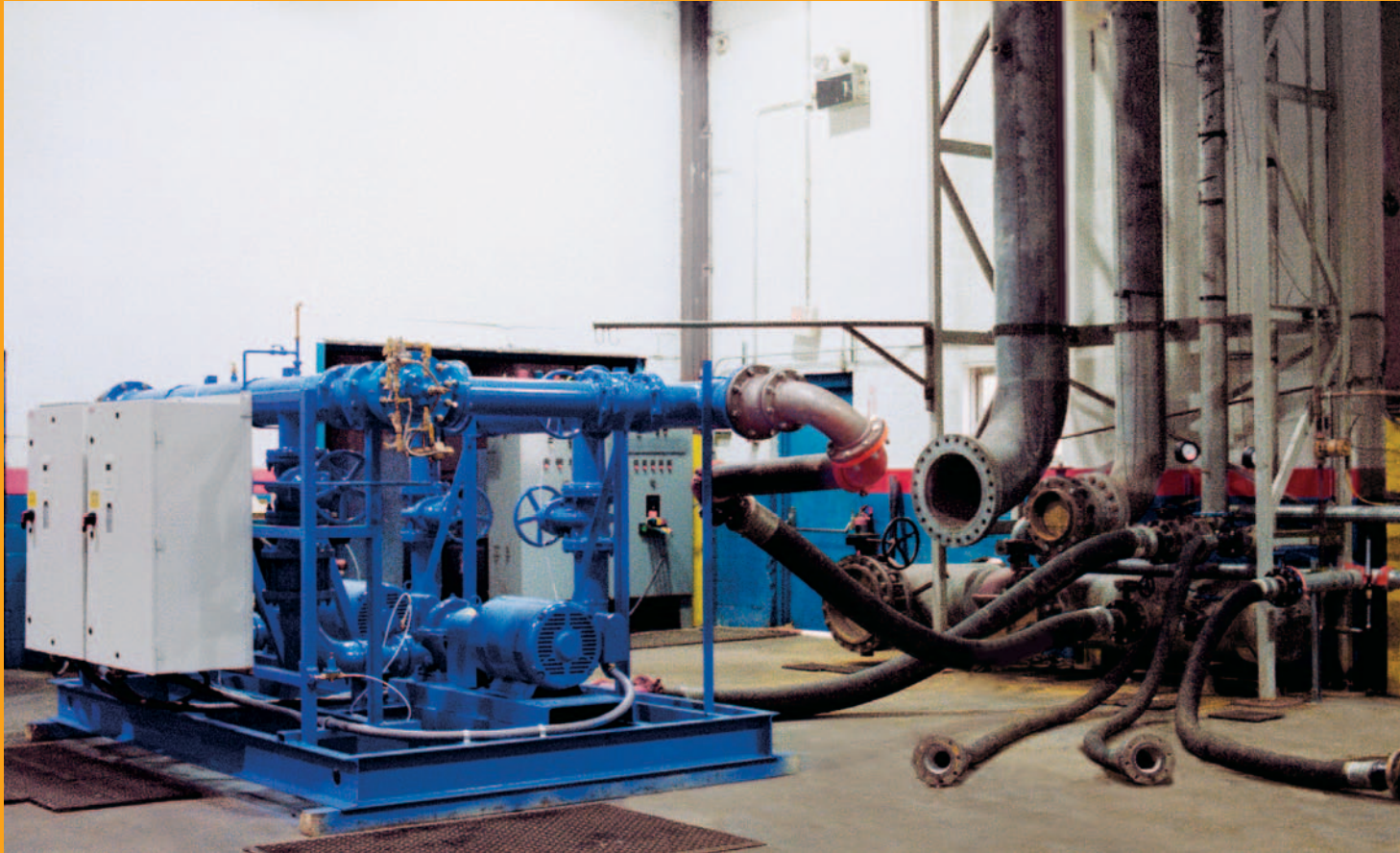




NIST TEST FACILITY



Our promise to you...

Your TIGERFLOW factory engineered system will arrive ready to operate reliably to the required specifications, with the simplest of site installation.

Since 1985 **TIGERFLOW** has provided full performance testing that provides critical advantages for system owners, designers and contractors. In addition to third-party certification, each factory built **TIGERFLOW** system is tested to meet in-the-field operating specifications before shipment. That means each unit arrives on site meeting and/or exceeding all relevant industry standards, in addition to site performance specifications. Liability and performance risks are eliminated. Our packaged system engineering expertise with NIST Test Center renders site-built/site-certified systems a thing of the past.



Every system is factory tested to meet commercial, municipal, plumbing, fire protection, irrigation, HVAC, heat transfer, hot water heating to process and industrial standards.



TOTAL THIRD PARTY SYSTEM

CERTIFICATION complying with OSHA & Federal Regulations 29CFR1910.303, 29CFR1910.399, NFPA Pamphlet #70 (National Electric Code) article 90-7

- UL/ C-UL listed packaged pumping system label "QCZJ"
- ETL/ C-ETL listed packaged fire pump systems
- City of Los Angeles Approval Code #m-980006
- City of Chicago Standards
- CMR 248 Massachusetts Plumbing Code Approval #p3-0204-58
- State of Ohio Industrialized Buildings Authorization #308.02
- State of Washington, Dept. of Labor & Industries Approval
- UL/C-UL 508/918 industrial control panel facility
- All ASME code section 9 welders
- OSHA compliant safety program
- In depth quality assurance program
- NIST traceable & calibrated test facility
- Certificate of product liability insurance
- Single source system warranty

FULL PERFORMANCE SYSTEM TEST FACILITY:

- Independently calibrated and traceable to NIST standards
- 10,000+ GPM flow rate
- 8000 gallon NSF-61 coated test tank
- Test loops, Schedule 40 hot dipped galvanized steel (20", 12", 16", 3")
- (4) Flowsensors +/- 1% accuracy
- (5) Pressure transducers +/- 1% accuracy
- (2) Temperature sensors w/RTD'S
- Testing up to 1000 total connected HP
- Three phase voltages: (460/230/208, 3Ø)
- Single phase voltages: (240/208/120/1 Ø)
- Tiger Eye solid state microprocessor based master test & control panel
- Flow in GPM (4) separate digital flow-meters
- Pressure in PSI & Feet TDH
- KW, amperage, voltage
- Wire to water efficiency indication/testing
- HVAC test control
- X-Y System performance testing/test reports
- Factory trained system technician
- Research & development facility



TIGERFLOW®

Engineered Systems to the World

4034 Mint Way
Dallas, TX 75237

(800) 783-6756

Tel: (214) 337-8780

Fax: (214) 333-2742

www.TIGERFLOW.com

E-mail: sales@TIGERFLOW.com

REPRESENTED BY: